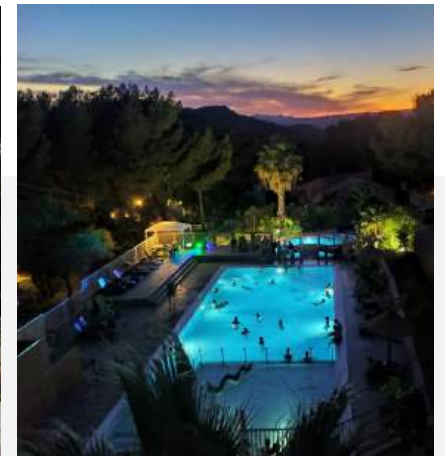


Opening date:
11/04 to 30/09

Aquatic area 237m2



Clos Ste Thérèse



NOUS SOMMES DANS UNE ZONE A FEU A RISQUE MODERE QUELQUES PRECAUTIONS A PRENDRE DANS NOTRE REGION BIEN ETEINDRE VOS CIGARETTES STRICTEMENT INTERDIT D'UTILISER DES BOUGIES STRICTEMENT INTERDIT DE FAIRE DES BARBECUES A GAZ OU A CHARBON LAISSEZ LES ROUTES, LES CHEMINS ET SORTIE DE SECOURS DEGAGES. WE ARE IN A MODERATE RISK AREA OF FIRE SOMME PRECAUTIONS IN OUR REGION ALTHOUGH EXTINGUISH YOUR CIGARETTES STRICTLY FORBIDDEN TO USE CANDLES STRICTLY FORBIDDEN TO USE CANDLES STRICTLY FORBIDDEN TO GAS GRILL OR CHARCOAL LET THE ROADS AND EMERGENCY EXITS RELEASED

Terrain de 4h: 29 locations et 89 emplacements.



Lieu de refuge / Places of refuge :
La Cadière d'Azur : Salle Fontanarosa, Salle des gardes, salle culturelle

D559

<p>RECEPTION</p> <p>DEPOT PAIN / CROISSANT / PAIN AU CHOCOLAT</p> <p>SNACK / BAR</p> <p>COIFFEUSE / HAIRDRESSEUR</p>	<p>PISCINES / SWIMMING POOL</p> <p>AIRE DE SERVICE CAMPING CAR / CAMPER SERVICE AREA</p> <p>WC CHIMIQUE / CHIMICAL WC</p> <p>WC CHIEN / DOG WC DOUCHE CHIEN / DOG SHOWER</p> <p>POUBELLE ET TRI SELECTIF / GARBAGE AND SELECTIVE SORTING</p>	<p>SANITAIRES / SANITARIES</p> <p>PARKING</p> <p>JEUX ENFANTS / CHILDREN'S PLAYGROUND</p> <p>PETANQUE</p> <p>ESPACE JEUX ENFANTS / TODDLER'S PLAYGROUND</p>	<p>TERRAIN MULTISPORT / SPORT FIELD</p> <p>PING-PONG</p> <p>WIFI Choisissez/Choose Connexion Clos Ste Thérèse. 10mn gratuites/free</p> <p>FONTAINE / FOUNTAIN</p> <p>COFFRET ELECTRIQUE OUVERT / OPEN ELECTRICAL BOX COFFRET ELECTRIQUE FERME / CLOSED ELECTRICAL BOX</p>	<p>Sanitaires / Sanitaires</p> <p>S1 WC S2 WC S3 WC S4 WC S5 WC S6 WC</p> <p>PREMIUM VUE MER / SEA VIEW TENTE / TENT</p> <p>Securite / Safety</p> <p>EXTINCTEUR / EXTINGUISHER ROBINET D INCENDIE / FIRE HOSE REEL POINT DE RASSEMBLEMENT / ASSEMBLY POINT</p> <p>SORTIE DE SECOURS / EMERGENCY EXIT SENS D'EVACUATION / EMERGENCY EXIT DIRECTION</p>
--	--	--	---	---

Camping Clos Ste Thérèse

Informations:

Nearby :

Bus-station in front of the campsite, Bandol's Railway at 4km, Supermarket à 1.6km, Bandol and St Cyr-sur-mer at 3km.

Informations on the price:

Locations's supplement : Our tarifs include water, electricity and gaz but not the cleaning, nor the bed and toilet linen

Baby kit (Baby bed and baby' chair, baby bath) : 30€/week, 5.20€/nigth .

You will be charged extra per night:

- Extra car: 6€

- Dog*: 5,40€

*passport up to date is mandatory, dogs classified dangerous aren't accepted.

- Choice rental: 18€

"SUPER FLEXI" HOLIDAYS: Change of program ? Possibility to modify your stay up to 7 days before your scheduled arrival date and reschedule or modify your holiday within 2 years ! A credit voucher (for the total amount of your deposit,

deducted from the booking fee ant the HOLIDAYS Super Flexi and booking fee) will be given to you, no justification will be required. See the conditions of this option in our conditions of sale. 3.8% of the total amount of your stay (with a minimum of 12,50€).

Sales of disposable sheet:

-1 person 9.90€

-2 persons to 140: 14.50€

-2 persons to 160: 15€

Payment :

Credit card or cash

Tourist tax 2024: 0.65€/night by adult

Eco-tax: 0.55€/nuit

Equipments on the campsite:

- Washing-machine

- Ironing room

- Wi-Fi all the campsite

- Snack (Ascension + pentecote and 15.06 to 20.09)

- Library

- Touristic's informations

- Animation (12.7 to 25.8).

- Boules courts

- Childrens playground

- Tennis tables

- Aquatic area of 237m2 (with paddling pool and spa).

- Bread sales

- Area for Motor Home

- Sports field

- Area for young children

- Hairdresser

11/4 to 12/7 and 30/8 to 30/9
-15% off from the 8th night of the stay
12/7 to 30/8
-7% on the second week

-7%
and -
15%

Rates 2025

Rentals

Bungalows «St Cyr-sur-mer»



4

L23, L24 and L34

Features:

L23: *Very beautiful sea view, shady.*

L24: *Beautiful sea view, shady.*

L34: *Very beautiful sea view, partial shade.*

Type: Tents bungalows 19m² with covered terrace

Day for arrival and departure (only high season and very high season):

L23 Saturday. Check-in at 4.30 pm/Check-out at 9.30 am.

L24 Saturday. Check-in at 5 pm/Check-out at 10 am

L34 Saturday. Check-in at 5 pm/Check-out at 10 am

Characteristics: Two bedrooms, living room, TV, kitchen, electric 's grill, warm water. without warm water. First circulation in 2008.

Week		Low From 11/04 to 07/06 And from 13/09 to 30/09	Middle From 07/06 to 05/07 And from 30/08 to 13/09	Season From 05/07 to 12/07	High From 12/07 to 19/07 And from 23/08 to 30/08	Very high From 19/07 to 23/08
		321€	371€	515€	649€	735€
Short stay	From 11/04 to 05/07 From 30/08 to 30/09	We have short stays, for more informations you can visite our website (http://www.clos-therese.com/) or call us (+33 4 94 32 12 21)				

Bungalow «La Madrague»



L32 and L33

Features:

L32: *Beautiful sea view, Shady.*

L33: *Partial shade.*

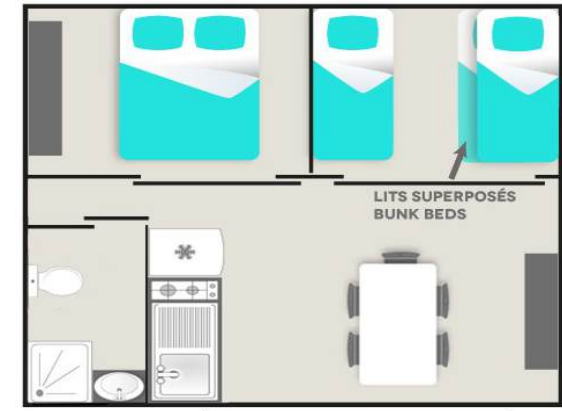
Type: Tents bungalows 25m² with covered terrace

Day for arrival and departure (only high season and very high season):

L33 Saturday. Check-in at 4.30 pm/Check-out at 9.30 am.

L32 Saturday. Check-in at 5 pm/Check-out at 10 am

Characteristics: Two bedrooms, living room, kitchen, electric 's grill, bathroom and toilet, warm water, TV. First circulation in 2007.



Week		Low From 11/04 to 07/06 And from 13/09 to 30/09	Middle From 07/06 to 05/07 And from 30/08 to 13/09	Season From 05/07 to 12/07	High From 12/07 to 19/07 And from 23/08 to 30/08	Very high From 19/07 to 23/08
		400€	450€	625€	757€	865€
Short stay	Du 11/04 au 05/07 et du 30/08 au 30/09	We have short stays, for more informations you can visite our website (http://www.clos-therese.com/) or call us (+33 4 94 32 12 21)				

Mobil Home «Port d'Alon»



L36

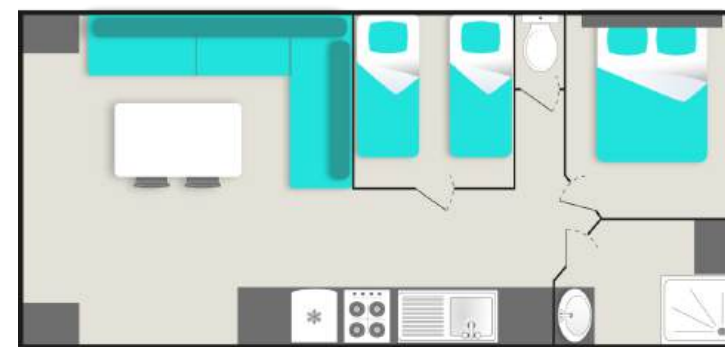
Features:

L36: partial shade

Type: Mobil home 30m² with covered terrace

Day for arrival and departure (only high season and very high season):
Saturday. Check-in at 5 pm/Check-out at 10 am.

Characteristics: Two bedrooms, living room, kitchen, bathroom and separate toilet, tv, air-conditioning, electric 's grill. Renovation in 2024.



Week		Low From 11/04 to 07/06 And from 13/09 to 30/09	Middle From 07/06 to 05/07 And from 30/08 to 13/09	Season From 05/07 to 12/07	High From 12/07 to 19/07 And from 23/08 to 30/08	Very high From 19/07 to 23/08
		414€	493€	757€	1081€	1262€
Short stay	Du 11/04 au 05/07 et du 30/08 au 30/09	We have short stays, for more informations you can visite our website (http://www.clos-therese.com/) or call us (+33 4 94 32 12 21)				

Mobil Home «Six Fours les plages»



L17, L31

Features:

L17: *Very beautiful sea view, shady.*

L31: *Very beautiful sea view, partial shade.*

Type: Mobil home 26m² with covered terrace

Day for arrival and departure (only high season and very high season):

L17 Saturday. Check-in at 4.30 pm/Check-out at 9.30 am.

L31 Sunday. Check-in at 4.30 pm/Check-out at 9.30 am

Characteristics: Two bedrooms, living room, kitchen, two washbasins and two toilets, a shower, tv, air-conditioning, electric 's grill, warm



Week		Low From 11/04 to 07/06 And from 13/09 to 30/09	Middle From 07/06 to 05/07 And from 30/08 to 13/09	Season From 05/07 to 12/07	High From 12/07 to 19/07 And from 23/08 to 30/08	Very high From 19/07 to 23/08
		414€	493€	757€	1081€	1262€
Short stay	From 11/04 to 05/07 And from 30/08 to 30/09	We have short stays, for more informations you can visite our website (http://www.clos-therese.com/) or call us (+33 4 94 32 12 21)				

Lodge « Les Embiez »



5

L12 and L14

Features:

L12: *Very beautiful sea view, shady.*

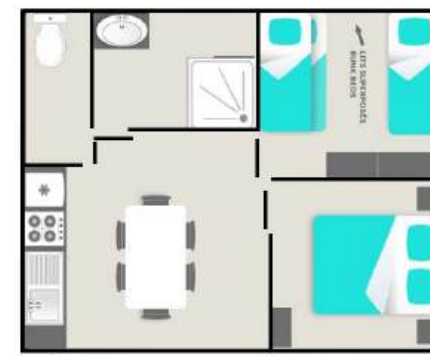
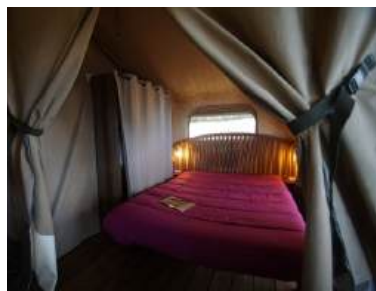
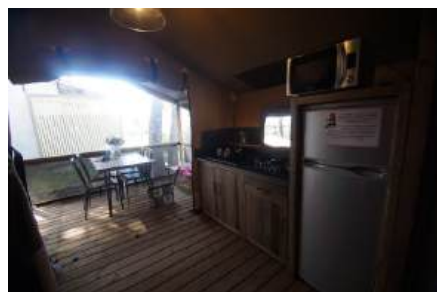
L14: *Very beautiful sea view, shady.*

Type: Lodges 23.5m² with a covered terrace

Day for arrival and departure (only high season and very high season):

Sunday. Check-in at 5 pm/Check-out at 10 am.

Characteristics: Two bedrooms, living room, kitchen, electric 's grill, bathroom and toilet, tv, warm water. First circulation in 2018



Week		Low	Middle	Season	High	Very high
		From 11/04 to 07/06 And from 13/09 to 30/09	From 07/06 to 05/07 And from 30/08 to 13/09	From 05/07 to 12/07	From 12/07 to 19/07 And from 23/08 to 30/08	From 19/07 to 23/08
		400€	478€	654€	959€	1096€
Short stay	From 11/04 to 05/07 And from 30/08 to 30/09	We have short stays, for more informations you can visite our website (http://www.clos-therese.com/) or call us (+33 4 94 32 12 21)				

Lodge « Porquerolles »



5

L15 and L16

Features:

L15, L16: Sea view, shady

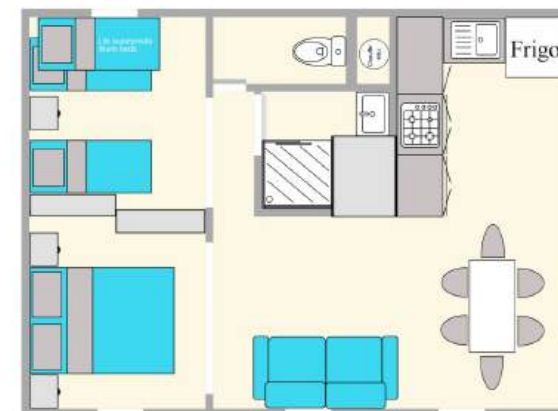
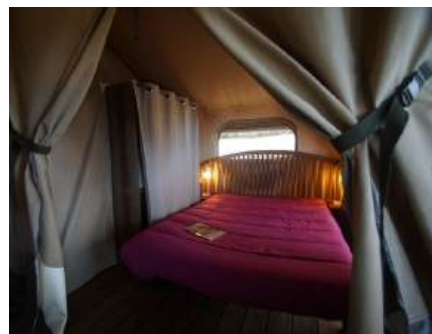
Type: Lodges 34m² with a covered terrace.

Day for arrival and departure (only high season and very high season): Sunday.

L15 Sunday. Check-in at 4.30 pm/Check-out at 9.30 am.

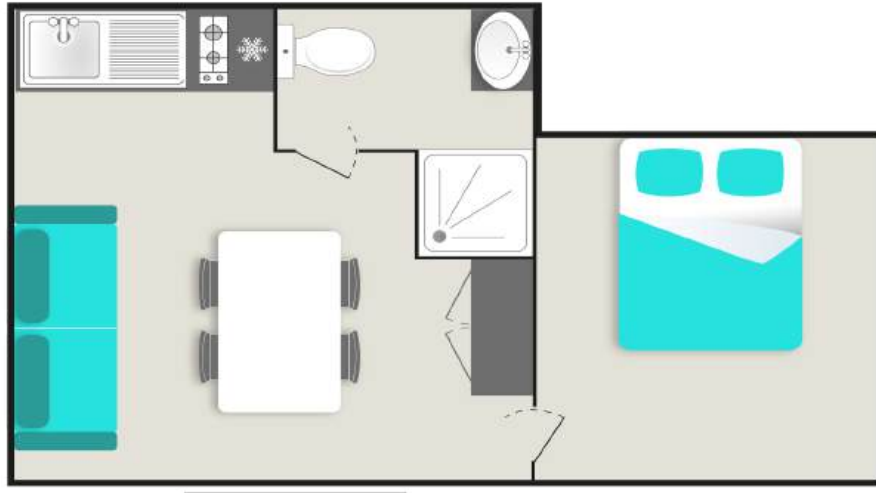
L16 Sunday. Check-in at 5 pm/Check-out at 10 am

Characteristics: Two bedrooms, living room, kitchen, electric 's grill, bathroom and toilet, tv, warm water, air conditionning. First circulation in 2019.



Week		Low From 11/04 to 07/06 And from 13/09 to 30/09	Middle From 07/06 to 05/07 And from 30/08 to 13/09	Season From 05/07 to 12/07	High From 12/07 to 19/07 And from 23/08 to 30/08	Very high From 19/07 to 23/08
		450€	550€	757€	1146€	1319€
Short stay	From 11/04 to 05/07 And from 30/08 to 30/09	We have short stays, for more informations you can visite our website (http://www.clos-therese.com/) or call us (+33 4 94 32 12 21)				

Chalet «Le Brusco»



2

L9

Features:

L9: *Very beautiful sea view, shady.*

Type: Chalet 21m² with a covered terrace.

Day for arrival and departure (only high season and very high season):

L9 Sunday. Check-in at 4.30 pm/Check-out at 9.30 am

Characteristics: A bedroom, living room, kitchen, bathroom and toilet, TV, electric 's grill, warm wate, Air-conditioning. First circulation in 2008. Relooking 2018.



Week		Low From 11/04 to 07/06 And from 13/09 to 30/09	Middle From 07/06 to 05/07 And from 30/08 to 13/09	Season From 05/07 to 12/07	High From 12/07 to 19/07 And from 23/08 to 30/08	Very high From 19/07 to 23/08
		400€	464€	647€	793€	952€
Short stay	From 11/04 to 05/07 And from 30/08 to 30/09	We have short stays, for more informations you can visite our website (http://www.clos-therese.com/) or call us (+33 4 94 32 12 21)				

Chalet « Le Castellet »



 2+2*

L10

Features:

L10: partial shade.

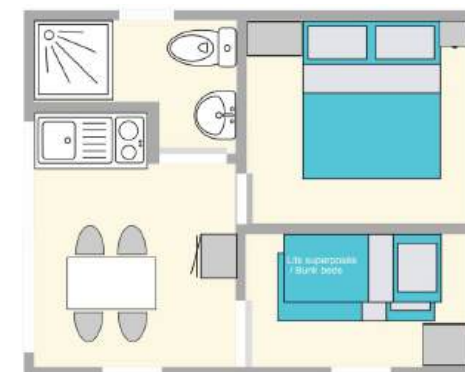
Type: Chalet 17.5m² , with a covered terrace

Day for arrival and departure (only high season and very high season):

Saturday. Check-in at 5 pm/Check-out at 10 am.

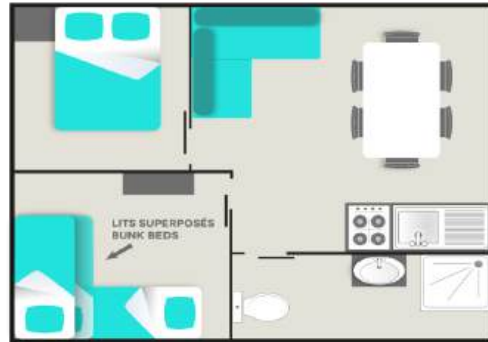
Characteristics: Two bedrooms, living room, kitchen, bathroom and toilet, TV, electric's grill, warm water. First circulation in 2006.

*2 adult and 2 children (-12 years)



Week		Low From 11/04 to 07/06 And from 13/09 to 30/09	Middle From 07/06 to 05/07 And from 30/08 to 13/09	Season From 05/07 to 12/07	High From 12/07 to 19/07 And from 23/08 to 30/08	Very high From 19/07 to 23/08
		400€	464€	647€	800€	959€
Short stay	From 11/04 to 05/07	We have short stays, for more informations you can visite our website (http://www.clos-therese.com/) or call us (+33 4 94 32 12 21)				

Chalet «Bandol»



5

L11, L18, L19 and L20

Features:

L20: *Very beautiful sea view, partial shade.*

L18, L19: *Very beautiful sea view, Shady.*

L11 : *Beautiful sea view, partial shade.*

Type: Chalets 25m² (L18 /L19) or chalets 28m²(L11/L20), with a covered terrace.

Day for arrival and departure (only high season and very high season):

Sunday L11 Check-in at 4.30 pm/Check-out at 9.30 am.

Sunday L18 Check-in at 5 pm/Check-out at 10 am.

Saturday L19 Check-in at 4.30 pm/Check-out at 9.30 am

Saturday L20.Check-in at 5 pm/Check-out at 10 am

Characteristics: Two bedrooms, living room, kitchen, bathroom and toilet, TV, electric 's grill, warm water. Air-conditioning. First circulation in



Week		Low From 11/04 to 07/06 And from 13/09 to 30/09	Middle From 07/06 to 05/07 And from 30/08 to 13/09	Season From 05/07 to 12/07	High From 12/07 to 19/07 And from 23/08 to 30/08	Very high From 19/07 to 23/08
		471€	571€	845€	1090€	1341€
Short stay	From 11/04 to 05/07	We have short stays, for more informations you can visite our website (http://www.clos-therese.com/) or call us (+33 4 94 32 12 21)				

Chalet «Bandol»



 5

L7

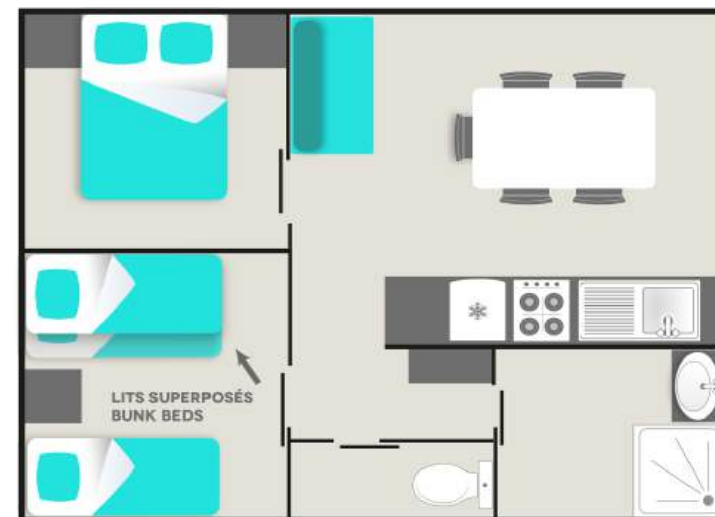
Features:

L7: Beautiful sea view, shady.

Type: Chalet 25m² with covered terrace.

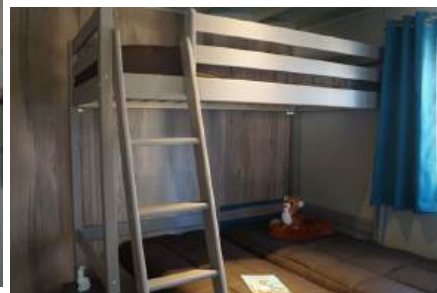
Day for arrival and departure (only high season and very high season): Sunday. Check-in at 4.30 pm/Check-out at 9.30 am

Characteristics: Two bedrooms, living room, kitchen, bathroom and separate toilet, TV, electric 's grill, warm water. Air-conditioning.



Week	Low From 11/04 to 07/06 And from 13/09 to 30/09	Middle From 07/06 to 05/07 And from 30/08 to 13/09	Season From 05/07 to 12/07	High From 12/07 to 19/07 And from 23/08 to 30/08	Very high From 19/07 to 23/08
	471€	571€	845€	1090€	1341€
Short stay	From 11/04 to 05/07	We have short stays, for more informations you can visite our website (http://www.clos-therese.com/) or call us (+33 4 94 32 12 21)			

Chalet «Cassis»



5 

L2, L3, L4, L25, L26 et L35

Features:

L2: *Beautiful sea view, partial shade*

L35: *Partial shade.*

L3: *Beautiful sea view, shady.*

L4: *Very beautiful sea view, partial shade*

L25. L26: *Very beautiful sea view, partial shade*

Type: Chalet 32m² with a covered terrace.

Day for arrival and departure (only high season and very high season):

Saturday L3/L35. Check-in at 16.30 pm/Check-out at 9.30 am

Saturday L4/L2. Check-in at 5 pm/Check-out at 10 am

Sunday L25. Check-in at 4.30 pm/Check-out at 9.30 am

Sunday L26. Check-in at 5 pm/Check-out at 10 am

Characteristics: Two bedrooms, living room, kitchen, bathroom and separate toilet, tv, electric 's grill, air conditionning, warm water. First circulation in 2014 (L3/L4), 2016 (L25 et L26) and 2017 (L2 et L35).

Week

Low

From **11/04** to **07/06**
And from **13/09** to **30/09**

521€

Middle

From **07/06** to **05/07**
And from **30/08** to **13/09**

628€

Season

From **05/07** to **12/07**

897€

High

From **12/07** to **19/07**
And from **23/08** to **30/08**

1269€

Very high

From **19/07** to **23/08**

1478€

Short stay

From **11/04** to **05/07**

We have short stays, for more informations you can visite our website (<http://www.clos-therese.com/>) or call us (+33 4 94 32 12 21)

Chalet «La Cadière d'Azur»



 5

L8

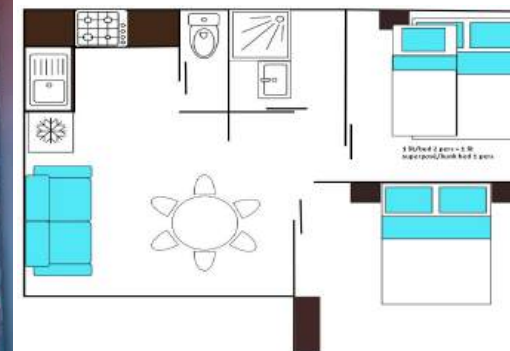
Features:

L8: Partial shade

Type: Chalet 26m² with a covered terrace.

Day for arrival and departure (only high season and very high season): Sunday. Check-in at 5 pm/Check-out at 10 am

Characteristics: Two bedrooms, living room, kitchen, bathroom and toilet separated, TV, barbecue or plancha, air-conditioning, warm water. First circulation in 2023.



Week		Low From 11/04 to 07/06 And from 13/09 to 30/09	Middle From 07/06 to 05/07 And from 30/08 to 13/09	Season From 05/07 to 12/07	High From 12/07 to 19/07 And from 23/08 to 30/08	Very high From 19/07 to 23/08
		471€	571€	795€	995€	1341€
Short stay	From 11/04 to 05/07	We have short stays, for more informations you can visite our website (http://www.clos-therese.com/) or call us (+33 4 94 32 12 21)				

Chalet «Les Lecques»



6

L5

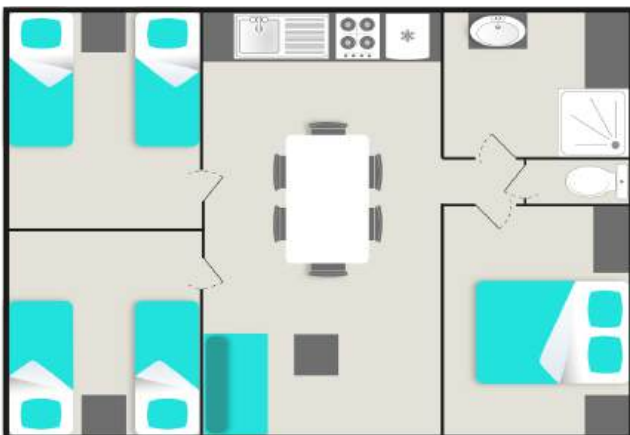
Features:

L5: *Very beautiful sea view, partial shade.*

Type: Chalet 34m² with a covered terrace.

Day for arrival and departure (only high season and very high season): Sunday. Check-in at 4.30 pm/Check-out at 9.30 am

Characteristics: Three bedrooms, living room, kitchen, bathroom and separate toilet, TV, air-conditioning, electric 's grill, warm water. First circulation in 2011.



Week		Low	Middle	Season	High	Very high
		From 11/04 to 07/06 And from 13/09 to 30/09	From 07/06 to 05/07 And from 30/08 to 13/09	From 05/07 to 12/07	From 12/07 to 19/07 And from 23/08 to 30/08	From 19/07 to 23/08
		643€	771€	1044€	1428€	1600€
Short stay	From 11/04 to 05/07	We have short stays, for more informations you can visite our website (http://www.clos-therese.com/) or call us (+33 4 94 32 12 21)				

Chalet «Sanary-sur-mer»



6

L29 Stunning sea view, great comfort, superb terrace, a true favorite

Features:

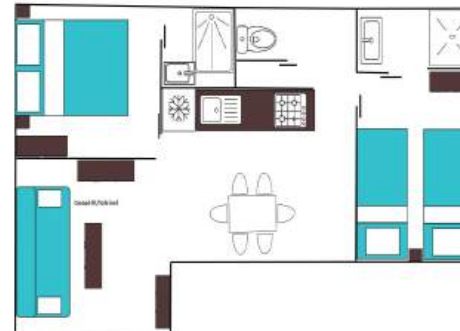
L29: Very beautiful sea view, partial shade.

Type: Chalet 35m² and superb Terrace with the garden living room terrace .

Day for arrival and departure (only high season and very high season):

Sunday. Check-in at 4.30 pm/Check-out at 9.30 am

Characteristics: A bedroom, living room, kitchen, 2 bathroom, toilet separated, TV, barbecue or plancha, dishwasher, warm water. First circulation in 2023.



Week		Low From 11/04 to 07/06 And from 13/09 to 30/09	Middle From 07/06 to 05/07 And from 30/08 to 13/09	Season From 05/07 to 12/07	High From 12/07 to 19/07 And from 23/08 to 30/08	Very high From 19/07 to 23/08
		735€	878€	1147€	1507€	1702€
Short stay	From 11/04 to 05/07 And from 30/08 to 30/09	We have short stays, for more informations you can visite our website (http://www.clos-therese.com/) or call us (+33 4 94 32 12 21)				

Chalet «La Ciotat»



8

L1

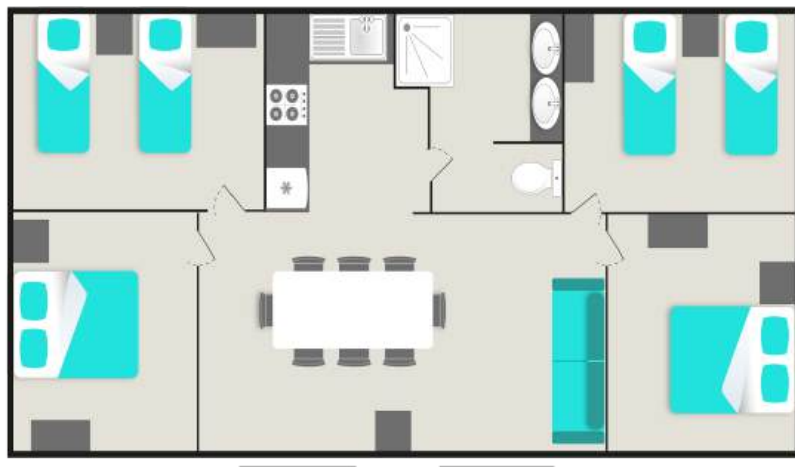
Features:

L1: Sea View. Partial shade

Type: Chalet 60m² with a covered terrace

Day for arrival and departure (only high season and very high season): Saturday. Check-in at 4.30 pm/Check-out at 9.30 am

Characteristics: Four bedrooms, living room, kitchen, bathroom and separate toilet, TV, air-conditioning, electric 's grill. Renovation 2024.



Week	Low	Middle	Season	High	Very high
	From 11/04 to 07/06 And from 13/09 to 30/09	From 07/06 to 05/07 And from 30/08 to 13/09	From 05/07 to 12/07	From 12/07 to 19/07 And from 23/08 to 30/08	From 19/07 to 23/08
	756€	907€	1176€	1536€	1788€
Short stay	From 11/04 to 05/07	We have short stays, for more informations you can visite our website (http://www.clos-therese.com/) or call us (+33 4 94 32 12 21)			

Camping Clos Ste Thérèse

Informations:

Nearby :

Bus-station in front of the campsite, Bandol's Railway at 4km,
Supermarket à 1,6km, Bandol and St Cyr-sur-mer at 3km.

Informations on the price:

- Choice pitch: 18€
- Fridge rental : 11€/night and 60€/week (minimum 3 nights).

"SUPER FLEXI" HOLIDAYS: Change of program ? Possibility to modify your stay up to 7 days before your scheduled arrival date and reschedule or modify your holiday within 2 years ! A credit voucher (for the total amount of your deposit (deducted from the booking fee and the HOLIDAYS Super Flexi option) will be given to you, no justification will be required. See the conditions of this option in our conditions of sale. 3.8% of the total amount of your stay (with a minimum of 12,50€).

Payment :

Credit card or cash.

Tourist tax 2024: 0.86€/night by adult.

Eco-tax: 0.55€/nuit

Equipments on the campsite:

- Washing-machine
- Ironing room
- Wi-Fi all the campsite.
- Snack-bar (Ascension + pentecote and 15.06 to 20.09)
- Library
- Touristic's informations
- Animation (12/07 to 24/08)
- Boules courts
- Childrens playground
- Tennis tables
- Aquatic area of 237m2 (with paddling pool and spa).
- Bread sales
- Area for Motor Home
- Sports field
- Area for young children
- Animation room
- Hairdresser

**- 10%
to
- 15%**

From 11/04 to 19/07

And

25/08 to 30/09

Get 15% off

From the

5th night

(for a minimum stay of 7 nights)

And

From 19/07 to 25/08

Get 10% off

From the

10th night

Rates 2025 Camping

BASIC PITCH FOR TENT

Features: Some of them have a very beautiful sea view*

Type: A pitch for a tent, two persons, 10 amp and a car.

Characteristics : Between 80m² and 100m².

* Price supplement for pitches with nice sea view and very beautiful sea view



CLASSIC PITCH: TENT, CARAVAN OR MOTORHOME

Features: Some of them have a very beautiful sea view *

Type: Pitch for a tent, caravan or a motor home, two persons, 10 amp and a car.

Characteristics : Between 80m² and 100m².

* Price supplement for pitches with nice sea view and very beautiful sea view



PREMIUM PITCH: TENT, CARAVAN OR MOTORHOME

Features: Some of them have a very beautiful sea view *

Type: A pitch for a tent, a caravan or a motor home , two persons, 10 amp and a car.

Caractéristiques: More than 100m².

* Price supplement for pitches with nice sea view and very beautiful sea view





For hight and very hight season we propose short stays from two to six nights.

Find out more information about our rates on our website <http://www.clos-therese.com> or call us on

+33494321221

Price/night		Low 11/04 to 14/06 15/09 to 30/09 (1 night)	Middle 14/06 to 05/07 30/08 to 15/09 (1 night)	Season 05/07 to 19/07 25/08 to 30/08 (1 night)	High 19/07 to 26/07 (Minimum 7 nights)	Very high 26/07 to 25/08 (Minimum 7 nights)
Pitch for Tent / Caravan / Motorhome 2 persons + 1 car + 10 amp (2200 watts)	Premium + 100m ²	28,00€	37,00€	44,00€	53,00€	59,80€
	Classic Between 80m ² and 100m ²	26,00€	34,50€	38,50€	45,00€	52.50€
2 Basic Pitch for Tent 2 persons + 1 car + 10 amp (2200 watts)		25.50€	33,00€	37,00€	43,50€	48,40€
Extra sea view		3.00€	3.00€	3,50€	4,00€	4,00€
Adult/Child 10 to 18 years		5,00€	7.00€	8,00€	9,50€	10,30€
Child 4 to 10 years		3.50€	4,40€	5,00€	5,50€	6,20€
Children - 4 years		2,50€	2,60€	2,80€	3.20€	3,60€
Extra car		3,20€	4,50€	5,00€	5.50€	6,20€
Visitor		5.50€	5.50€	5,50€	5.50€	5,70€
Dog (Dogs classified dangerous are not accepted)		3,90€	4,00€	4,10€	4,20€	4,40€

GPS: S: 43,15938 E: 5,73023

If you come from Marseille: Go along the highway A50 and take the exit n°10 "St Cyr-sur-mer", take the direction Bandol D559, the campsite is located in 5,5km of the highway exit.

If you come from Toulon: Take the exit n°12 "Bandol" and go along the direction St Cyr-sur-mer D559, the campsite is located in 4,2km of the highway exit.

Follow road signs: campsite Clos Ste Therese or Golf Doce Fregate (just in front)

Map and acces





BOOKING TERMS AND

GENERAL INFORMATIONS:

Name and Surname _____ Address _____

Post Code _____ City _____ Country _____

E-mail _____ Phone number _____

Dates of arrival and departure : From _____ to _____			
Information			
Number of adults	Number children 10 to 18 years:	Number children 4 to 10 years:	Number of dog : * Dogs classified dangerous are not accepted
Accompanying persons			
Name, Surname	Address	Date of birth	Card number Issued date
CAMPING: (at least 7 nights in high and very high season and at least 2 nights in low, middle and season)			
Equipment	Dimensions	Choose of pitch categorie	
<input type="checkbox"/> Caravan (without wigh)	x cm	<input type="checkbox"/> Classic for Tent, caravan or motor-home	
<input type="checkbox"/> Awing	x cm	<input type="checkbox"/> Basic	
<input type="checkbox"/> Motorhome	_____ x _____ cm	<input type="checkbox"/> Premium for Tent, caravan or motor-home	
<input type="checkbox"/> Tent	_____ x _____ cm		
Extra (camping) _____			
<input type="checkbox"/> Choice of pitches		<input type="checkbox"/> Extra tent (write the number)	
<input type="checkbox"/> Refrigerator (minimum 3 nights)		<input type="checkbox"/> A sea view or beautiful sea view :	
<input type="checkbox"/> Flex Holidays			
RENTAL : Careful to the days of check-in and check-out in High and very High season : Saturday and Sunday			
<input type="checkbox"/> Bungalow «St Cyr-sur-mer»	<input type="checkbox"/> Chalet «Le Brusc»	<input type="checkbox"/> Chalet «BandoI»	<input type="checkbox"/> Chalet «Sanary-sur-mer»
<input type="checkbox"/> Bungalow «La Madrague»	<input type="checkbox"/> Chalet «Le Castellet»	<input type="checkbox"/> Chalet «Cassis»	<input type="checkbox"/> Chalet «La Ciotat»
<input type="checkbox"/> Mobile Home «Port d'Alon»	<input type="checkbox"/> Lodge « Les Embiez»	<input type="checkbox"/> Chalet «La Cadière d'Azur»	
<input type="checkbox"/> Mobile Home «Six Fours les plages»	<input type="checkbox"/> Lodge «Porquerolles»	<input type="checkbox"/> Chalet «Les Lecques»	
Extra (rentals)			
<input type="checkbox"/> Choice of rentals		<input type="checkbox"/> Baby kit (Baby's bed and baby's chair, baby bathtub)	
<input type="checkbox"/> cleaning service (at the end of the stzy)		<input type="checkbox"/> Flex Holidays	

Observation :

TERMS AND CONDITIONS:

- Only this booking form are valid for making reservations with us, as it contains all the necessary information to complete a booking.
- The final decision to confirm booking lies with the campsite who reserve the right not to disclose the reason behind a decision.
- Confirmation is subject to the acceptance of the following conditions:
 - The total amount to be paid for the booked period is as set by the campsite. To guarantee your booking a quarter of this amount+ a booking fee for a booking : 1.3% by reservation (for location, with a minimum 12€) and 1.5% (for pitch, with a minimum 10€) by reservation. As soon as we receive payment, we will confirm receipt of this sum and send you your accommodation details.
 - The balance of the stay must be paid in full one month before your arrival. In the absence of full payment 30 days before your arrival, the stay will be cancelled by the campsite and the deposit paid will be lost.
 - Any changes made on arrival or during the stay to the agreed number of people, cars, additional services or other shall immediately be accounted for and the appropriate charge made.
 - If, for whatever reason, the length of your stay is cut short, there will be no refund and the total cost of your stay will remain with campsite.
 - Any campers arriving before the agreed date or time may find that their booked pitch is unavailable to them.
 - Any booking for more than 2 accommodation units by the same natural person or by different natural persons who know each other and are travelling together for the same reasons and on the same holiday dates shall be considered as a group. You must contact Le Camping La Pierre Verte by telephone or e-mail. The campsite reserves the right to study the booking request before accepting or refusing this.

If you cancel your holiday within 30 days of the agreed arrival date, the amount paid already shall not be refunded and the balance of the stay be paid at the campsite.
In the event of a change to your stay less than 30 days before the scheduled date of arrival (change of date, modification of the stay) you will be asked to pay a change of stay 5% of the total amount of your stay (minimum 15€)

Flex Holidays :

This option is only available during your reservation. ok

In case of an unforeseen event, postpone or modify your vacation within the next 2 years of the date d’arrival to your initial stay.

You can modify your stay up to 7 days before your arrival date.

No justification will be required.

A voucher will be issued to you for the total amount of your deposit (deducted from the "Super Flexi" option service).

If the price of the new stay is cheaper, you will receive a new voucher for the difference.

If the price of the new stay is more expensive, the price difference must be paid.

This voucher is nominative

- Reservations are held for up to 24 hours following the agreed date and time of arrival. After this time, the reservation no longer stands and the amount paid shall not be refunded, but will remain with the campsite.
- All contracts are entered into with the named person on the booking form and pitches or location can, under no circumstances, be sub-let.
- In the event of litigation, only the Var Courts are competent

Only for locations:

- All our accommodation is non-smoking
- Rental prices are based on 2, 4, 5, 6 or 8 people plus 1 or 2 car. There is also a fee for each additional car.
- A security deposit of 350€, to cover any damages to the accommodation, plus a security deposit of 40€ à 70€ to cover any cleaning costs. A minimum amount of cleaning must be carried out by you (this is specified in your location). The accommodation must be left clean and tidy. Cleaning is the tenant's responsibility.
- The keys must be returned to 9:30 pm or 10pm(this is specified on the booking confirmation letter, the inventories of rental and also rentals) If the keys are not returned at the specified time will be charged 10€ per hour late.
- Only for pitches
- The rented pitches are available on the agreed day from 2pm. They must be vacated on the agreed departure day by 12 noon.
- Has the definitive acceptance, you will receive a notifying confirmation your N° from rental or pitch retained with dates and the precise hours of arrival and departure, the deposit paid.

Image

You authorise Camping Clos Ste Thérèse, as well as any person appointed by Camping Clos Ste Thérèse, to photograph, record or film you during your stay and to use the said images, sounds, videos and recordings on all media (in particular on websites or pages - including Facebook and Instagram - on presentation and promotional media and in travel or tourist guides). This authorisation applies both to you and to the persons staying with you. Its sole purpose is to ensure the promotion and animation of the establishment and may not in any way damage your reputation. This authorisation is granted free of charge, for all countries and for a period of 10 years.

Swimming area

Only bathing suits are admitted at the swimming-pool (speedos or boxer shorts for men, one or two piece swimsuit for ladies). Every other outfit will be refused (topless, thongs, bermuda shorts, burkini, wet suits...) unless medical issues with certificate.

- Electric Car: It is strictly forbidden to charge your car using the power outlets of rental properties or designated spaces. Non-compliance may result in an additional fee being charged.