

Opening date:  
03/04 to 30/09

# Rates 2026

## Pitch and Rental

### Camping Clos Ste Thérèse

Aquatic area 237m2





# Camping Clos Ste Thérèse

## Informations:

### Nearby :

Bus-station in front of the campsite, Bandol's Railway at 4km, Supermarket à 1.6km, Bandol and St Cyr-sur-mer at 3km.

### Informations on the price:

Locations's supplement : Our tariffs include water, electricity and gas but not the cleaning, nor the bed and toilet linen

Baby kit (Baby bed and baby' chair, baby bath) : 30€/a stay

You will be charged extra per night:

- Extra car: 6€

- Dog\*: 8,00€

\*passport up to date is mandatory, dogs classified dangerous aren't accepted.

- Choice rental: 20€

**"SUPER FLEXI" HOLIDAYS:** Change of program ? Possibility to modify your stay up to 7 days before your scheduled arrival date and reschedule or modify your holiday within 2 years ! A credit voucher (for the total amount of your deposit,

deducted from the booking fee and the HOLIDAYS Super Flexi and booking fee) will be given to you, no justification will be required. See the conditions of this option in our conditions of sale. 3.8% of the total amount of your stay (with a minimum of 13,50€).

### Sales of disposable sheet:

-1 person 10€

-2 persons to 140: 15€

-2 persons to 160: 16€

### Payment :

Credit card or cash

Tourist tax 2025: 0.86€/night by adult

Eco-tax: 0.65€/nuit

### Equipments on the campsite:

- Washing-machine

- Ironing room

- Wi-Fi all the campsite

- Snack

- Library

- Touristic's informations

- Animation (11.7 to 23.8).

- Boules courts

- Childrens playground

- Tennis tables

- Aquatic area of 237m2 (with paddling pool and spa).

- Bread sales

- Area for Motor Home

- Sports field

- Area for young children

- Hairdresser

03/4 to 11/7 and 29/8 to 30/9  
-15% off from the 8th night of the stay

11/7 to 29/8

-7% on the second week

**7% and  
15%**

# Rates 2026

# Rentals

# Bungalows «St Cyr-sur-mer»



 4

L23, L24 and L34

**Features:**

L23, L24 : Sea view, shady.

L34 : Partial shade.

**Type:** Tents bungalows 19m<sup>2</sup> with covered terrace

**Day for arrival and departure (only high season and very high season):**

**L23 Saturday.** Check-in at 4.30 pm/Check-out at 9.30 am.

**L24 Saturday.** Check-in at 5 pm/Check-out at 10 am

**L34 Saturday.** Check-in at 5 pm/Check-out at 10 am

**Characteristics:** Two bedrooms, living room, TV, kitchen, electric 's grill, warm water. without warm water. First circulation in 2008.

Week		Low	Middle	Season	High	Very high
		From 03/04 to 06/06 And from 12/09 to 30/09	From 06/06 to 04/07 And from 29/08 to 12/09	From 04/07 to 11/07 And from 22/08 to 29/08	From 11/07 to 25/07	From 25/07 to 22/08
		321€	371€	515€	649€	765€
Short stay	From 03/04 to 04/07	We have short stays, for more informations you can visite our website ( <a href="http://www.clos-therese.com/">http://www.clos-therese.com/</a> ) or call us (+33 4 94 32 12 21)				
	From 29/08 to 30/09					

# Bungalow «La Madrague»



L32 and L33

## Features:

**L32: Sea view, Shady.**

**L33: Partial shade.**

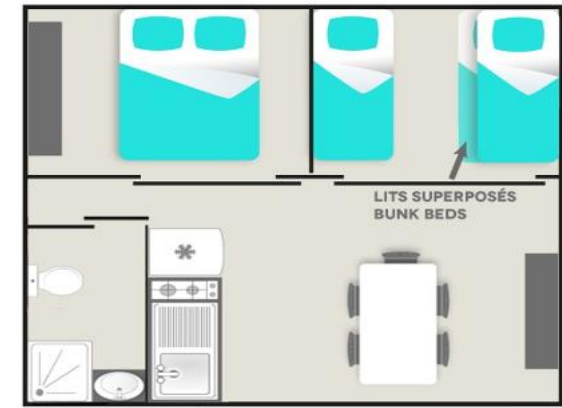
**Type:** Tents bungalows 25m<sup>2</sup> with covered terrace

**Day for arrival and departure (only high season and very high season):**

**L33 Saturday.** Check-in at 4.30 pm/Check-out at 9.30 am.

**L32 Saturday.** Check-in at 5 pm/Check-out at 10 am

**Characteristics:** Two bedrooms, living room, kitchen, electric 's grill, bathroom and toilet, warm water, TV. First circulation in 2007.



Week	Low	Middle	Season	High	Very high
	From 03/04 to 06/06 And from 12/09 to 30/09	From 06/06 to 04/07 And from 29/08 to 12/09	From 04/07 to 11/07 And from 22/08 to 29/08	From 11/07 to 25/07	From 25/07 to 22/08
	400€	450€	625€	757€	890€
Short stay	From 03/04 to 04/07	We have short stays, for more informations you can visite our website ( <a href="http://www.clos-therese.com/">http://www.clos-therese.com/</a> ) or call us (+33 4 94 32 12 21)			
	From 29/08 to 30/09				

# Mobil Home «Port d'Alon»



L36

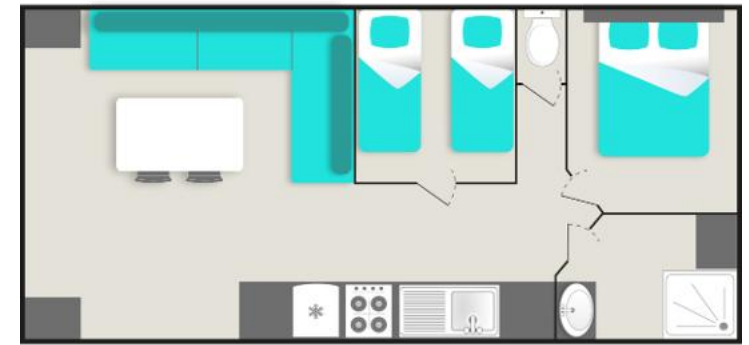
**Features:**

**L36: Partial shade**

**Type:** Mobil home 30m<sup>2</sup> with covered terrace

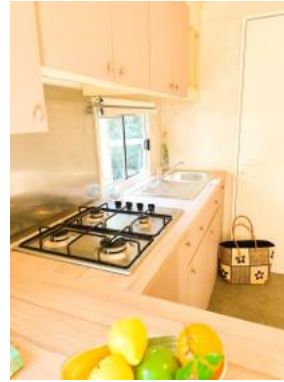
**Day for arrival and departure (only high season and very high season):**  
**Saturday.** Check-in at 5 pm/Check-out at 10 am.

**Characteristics:** Two bedrooms, living room, kitchen, bathroom and separate toilet, tv, air-conditioning, electric 's grill. Renovation in 2024.



Week	Low	Middle	Season	High	Very high
	From 03/04 to 06/06 And from 12/09 to 30/09	From 06/06 to 04/07 And from 29/08 to 12/09	From 04/07 to 11/07 And from 22/08 to 29/08	From 11/07 to 25/07	From 25/07 to 22/08
	414€	493€	780€	1115€	1315€
Short stay	From 03/04 to 04/07 From 29/08 to 30/09	We have short stays, for more informations you can visite our website ( <a href="http://www.clos-therese.com/">http://www.clos-therese.com/</a> ) or call us (+33 4 94 32 12 21)			

# Mobil Home «Six Fours les plages»



4

L17, L31

## Features:

**L17:** *Very beautiful sea view, shady.*

**L31:** *Beautiful sea view, partial shade.*

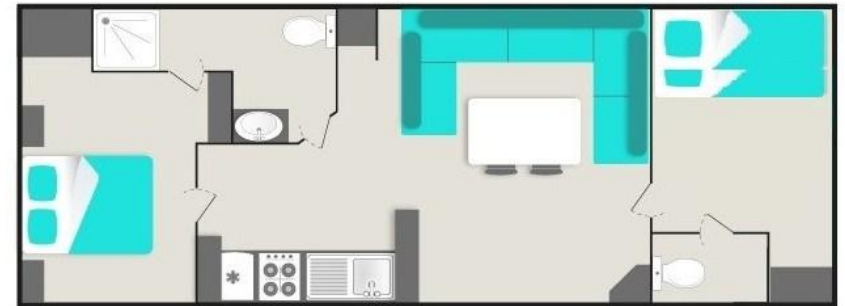
**Type:** Mobil home 26m<sup>2</sup> with covered terrace

**Day for arrival and departure (only high season and very high season):**

**L17 Saturday.** Check-in at 4.30 pm/Check-out at 9.30 am.

**L31 Sunday.** Check-in at 4.30 pm/Check-out at 9.30 am

**Characteristics:** Two bedrooms, living room, kitchen, two washbasins and two toilets, a shower, tv, air-conditioning, electric 's grill, warm water, Renovation in 2024.



Week		Low	Middle	Season	High	Very high
		From 03/04 to 06/06 And from 12/09 to 30/09	From 06/06 to 04/07 And from 29/08 to 12/09	From 04/07 to 11/07 And from 22/08 to 29/08	From 11/07 to 25/07	From 25/07 to 22/08
		414€	493€	780€	1115€	1315€
Short stay	From 03/04 to 04/07	We have short stays, for more informations you can visite our website ( <a href="http://www.clos-therese.com/">http://www.clos-therese.com/</a> ) or call us (+33 4 94 32 12 21)				
	From 29/08 to 30/09					

# Lodge « Les Embiez »



L12 and L14

## Features:

**L12:** *Very beautiful sea view, shady.*

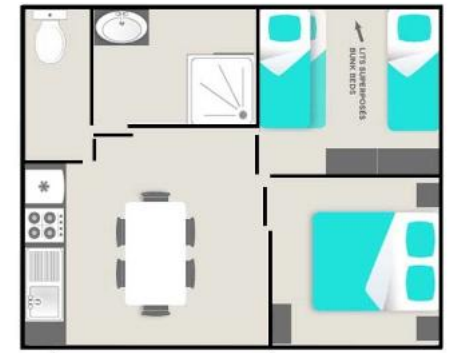
**L14:** *Very beautiful sea view, shady.*

**Type:** Lodges 23.5m<sup>2</sup> with a covered terrace

**Day for arrival and departure (only high season and very high season):**

**Sunday.** Check-in at 5 pm/Check-out at 10 am.

**Characteristics:** Two bedrooms, living room, kitchen, electric 's grill, bathroom and toilet, tv, warm water. First circulation in 2018



Week	Low	Middle	Season	High	Very high
	From 03/04 to 06/06 And from 12/09 to 30/09	From 06/06 to 04/07 And from 29/08 to 12/09	From 04/07 to 11/07 And from 22/08 to 29/08	From 11/07 to 25/07	From 25/07 to 22/08
	400€	478€	675€	990€	1140€
Short stay	From 03/04 to 04/07 From 29/08 to 30/09	We have short stays, for more informations you can visite our website ( <a href="http://www.clos-therese.com/">http://www.clos-therese.com/</a> ) or call us (+33 4 94 32 12 21)			

# Lodge « Porquerolles »



 5

L15 and L16

## Features:

**L16: Sea view, shady**

**L15: Shady**

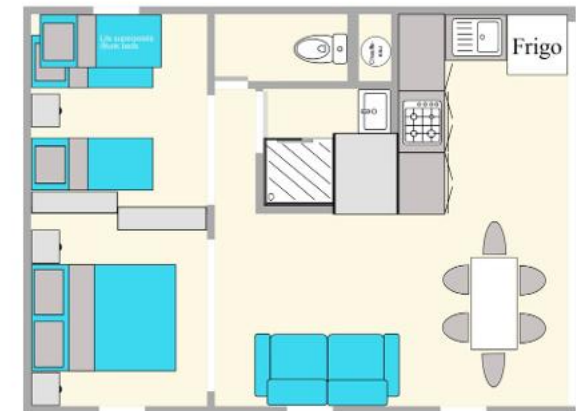
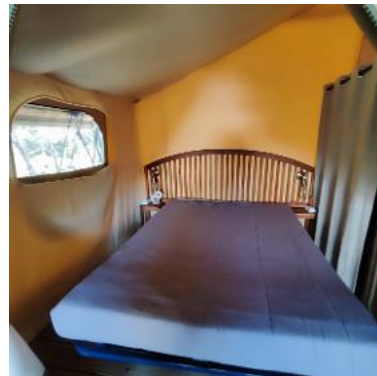
**Type:** Lodges 34m<sup>2</sup> with a covered terrace.

**Day for arrival and departure (only high season and very high season):** Sunday.

**L15 Sunday.** Check-in at 4.30 pm/Check-out at 9.30 am.

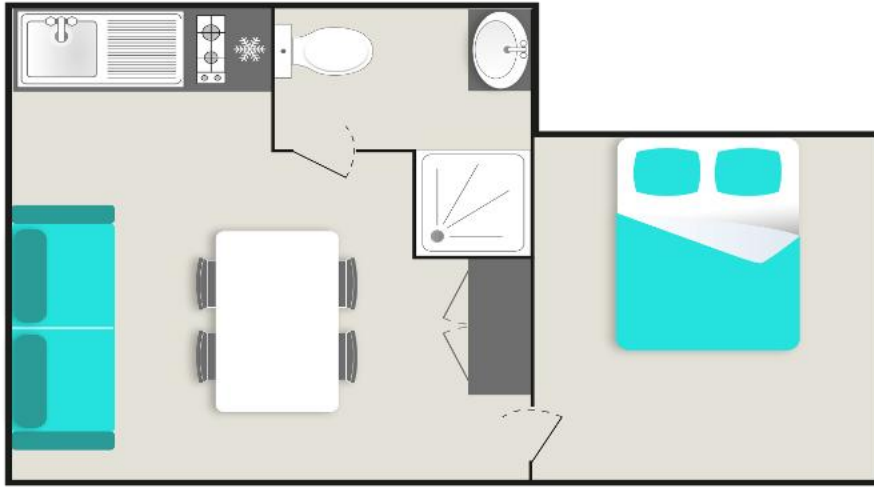
**L16 Sunday.** Check-in at 5 pm/Check-out at 10 am

**Characteristics:** Two bedrooms, living room, kitchen, electric 's grill, bathroom and toilet, tv, warm water, air conditioning. First



Week	Low	Middle	Season	High	Very high
	From 03/04 to 06/06 And from 12/09 to 30/09	From 06/06 to 04/07 And from 29/08 to 12/09	From 04/07 to 11/07 And from 22/08 to 29/08	From 11/07 to 25/07	From 25/07 to 22/08
	450€	550€	780€	1180€	1370€
Short stay	From 03/04 to 04/07	We have short stays, for more informations you can visite our website ( <a href="http://www.clos-therese.com/">http://www.clos-therese.com/</a> ) or call us (+33 4 94 32 12 21)			
	From 29/08 to 30/09				

# Chalet «Le Brusco»



2

L9

**Features:**

**L9:** *Very beautiful sea view, shady.*

**Type:** Chalet 21m<sup>2</sup> with a covered terrace.

**Day for arrival and departure (only high season and very high season):**

**L9 Sunday.** Check-in at 4.30 pm/Check-out at 9.30 am

**Characteristics:** A bedroom, living room, kitchen, bathroom and toilet, TV, electric 's grill, warm wate, Air-conditioning. First circulation in 2008. Relooking 2018.



Week	Low	Middle	Season	High	Very high
	From 03/04 to 06/06 And from 12/09 to 30/09	From 06/06 to 04/07 And from 29/08 to 12/09	From 04/07 to 11/07 And from 22/08 to 29/08	From 11/07 to 25/07	From 25/07 to 22/08
	400€	464€	665€	815€	990€
Short stay	From 03/04 to 04/07 From 29/08 to 30/09	We have short stays, for more informations you can visite our website ( <a href="http://www.clos-therese.com/">http://www.clos-therese.com/</a> ) or call us (+33 4 94 32 12 21)			

# Chalet « Le Castellet »



 2+2\*

L10

## Features:

**L10: partial shade**

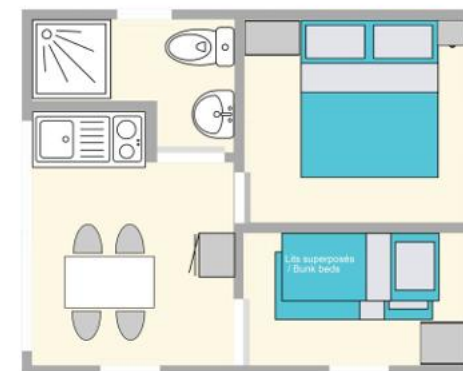
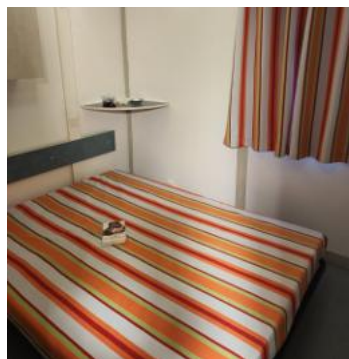
**Type:** Chalet 17.5m<sup>2</sup> , with a covered terrace

**Day for arrival and departure (only high season and very high season):**

**Saturday.** Check-in at 5 pm/Check-out at 10 am.

**Characteristics:** Two bedrooms, living room, kitchen, bathroom and toilet, TV, electric's grill, warm water. First circulation in 2006.

\*2 adult and 2 children (-12 years)



Week	Low	Middle	Season	High	Very high
	From 03/04 to 06/06 And from 12/09 to 30/09	From 06/06 to 04/07 And from 29/08 to 12/09	From 04/07 to 11/07 And from 22/08 to 29/08	From 11/07 to 25/07	From 25/07 to 22/08
	400€	464€	665€	825€	997€

Short stay	From 03/04 to 04/07	We have short stays, for more informations you can visite our website ( <a href="http://www.clos-therese.com/">http://www.clos-therese.com/</a> ) or call us (+33 4 94 32 12 21)
	From 29/08 to 30/09	

# Chalet «Bandol»



5

L7

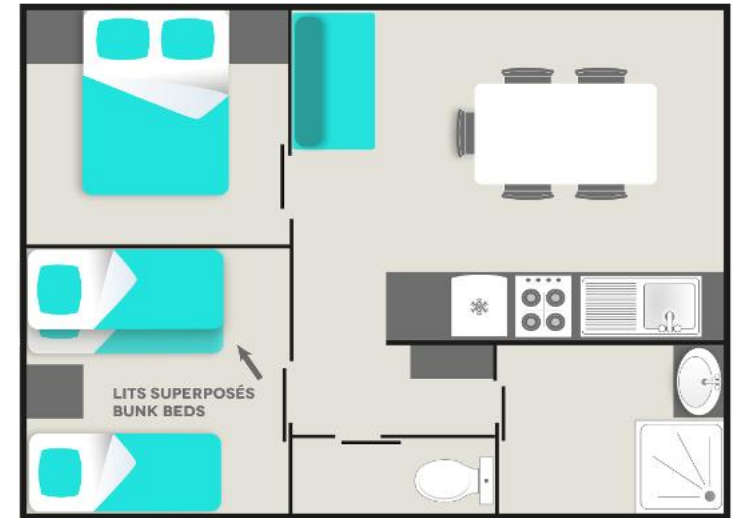
**Features:**

L7: *Very beautiful sea view, shady.*

**Type:** Chalet 25m<sup>2</sup> with covered terrace.

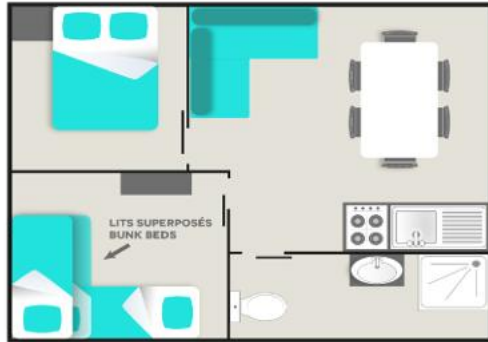
**Day for arrival and departure (only high season and very high season):** Sunday. Check-in at 4.30 pm/Check-out at 9.30 am

**Characteristics:** Two bedrooms, living room, kitchen, bathroom and separate toilet, TV, electric 's grill, warm water. Air-conditioning.



Week	Low	Middle	Season	High	Very high
	From 03/04 to 06/06 And from 12/09 to 30/09	From 06/06 to 04/07 And from 29/08 to 12/09	From 04/07 to 11/07 And from 22/08 to 29/08	From 11/07 to 25/07	From 25/07 to 22/08
	471€	571€	870€	1125€	1395€
Short stay	From 03/04 to 04/07	We have short stays, for more informations you can visite our website ( <a href="http://www.clos-therese.com/">http://www.clos-therese.com/</a> ) or call us (+33 4 94 32 12 21)			
	From 29/08 to 30/09				

# Chalet «Bandol»



5

L11, L18, L19 and L20

## Features:

**L18:** *Very beautiful sea view, Shady.*

**L11, L19, L20:** *Very beautiful sea view, partial shade.*

**Type:** Chalets 25m<sup>2</sup> (L18 /L19) or chalets 28m<sup>2</sup>(L11/L20), with a covered terrace.

**Day for arrival and departure (only high season and very high season):**

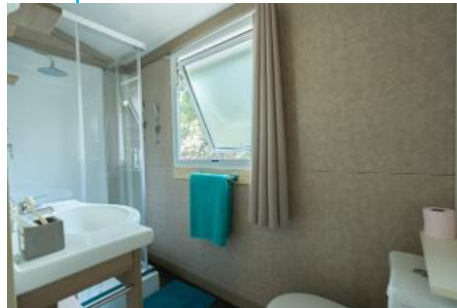
**Sunday L11** Check-in at 4.30 pm/Check-out at 9.30 am.

**Sunday L18** Check-in at 5 pm/Check-out at 10 am.

**Saturday L19** Check-in at 4.30 pm/Check-out at 9.30 am

**Saturday L20.**Check-in at 5 pm/Check-out at 10 am

**Characteristics:** Two bedrooms, living room, kitchen, bathroom and toilet, TV, electric 's grill, warm water. Air-conditioning. First circulation in 2013.



Week	Low	Middle	Season	High	Very high
	From 03/04 to 06/06 And from 12/09 to 30/09	From 06/06 to 04/07 And from 29/08 to 12/09	From 04/07 to 11/07 And from 22/08 to 29/08	From 11/07 to 25/07	From 25/07 to 22/08
	471€	571€	870€	1125€	1395€
Short stay	From 03/04 to 04/07	We have short stays, for more informations you can visite our website ( <a href="http://www.clos-therese.com/">http://www.clos-therese.com/</a> ) or call us (+33 4 94 32 12 21)			
	From 29/08 to 30/09				

# Chalet «Cassis»



5 

L2, L3, L4, L25, L26 et L35

**Features:**

L2: *Sea view, partial shade*

L35: *Partial shade*

L3, L4: *Beautiful sea view, shady*

L25, L26: *Very beautiful sea view, partial shade*

**Type:** Chalet 32m<sup>2</sup> with a covered terrace.

**Day for arrival and departure (only high season and very high season):**

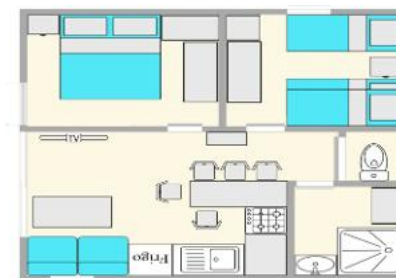
**Saturday L3/L35.** Check-in at 16.30 pm/Check-out at 9.30 am

**Saturday L4/L2.** Check-in at 5 pm/Check-out at 10 am

**Sunday L25.** Check-in at 4.30 pm/Check-out at 9.30 am

**Sunday L26.** Check-in at 5 pm/Check-out at 10 am

**Characteristics:** Two bedrooms, living room, kitchen, bathroom and separate toilet, tv, electric 's grill, air conditioning, warm water. First circulation in 2014 (L3/L4), 2016 (L25 et L26) and 2017 (L2 et L35).



Week		Low	Middle	Season	High	Very high
		From 03/04 to 06/06	From 06/06 to 04/07	From 04/07 to 11/07 And	From 11/07 to 25/07	From 25/07 to 22/08
		521€	628€	925€	1310€	1537€
Short stay	From 03/04 to 04/07	We have short stays, for more informations you can visite our website ( <a href="http://www.clos-therese.com/">http://www.clos-therese.com/</a> ) or call us (+33 4 94 32 12 21)				
	From 29/08 to 30/09					

# Chalet «La Cadière d'Azur»



 5

L8

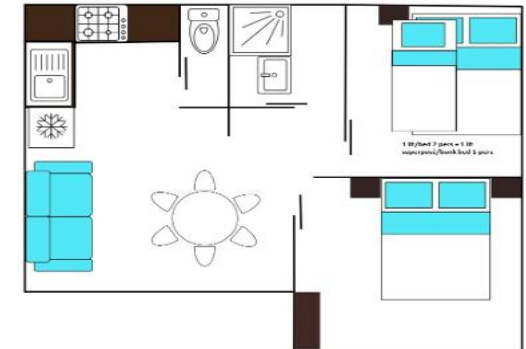
## Features:

**L8: Partial shade**

**Type:** Chalet 26m<sup>2</sup> with a covered terrace.

**Day for arrival and departure (only high season and very high season): Sunday.** Check-in at 5 pm/Check-out at 10 am

**Characteristics:** Two bedrooms, living room, kitchen, bathroom and toilet separated, TV, barbecue or plancha, air-conditioning, warm water. First circulation in 2023.



Week		Low	Middle	Season	High	Very high
		From 03/04 to 06/06	From 06/06 to 04/07	From 04/07 to 11/07 And	From 11/07 to 25/07	From 25/07 to 22/08
		471€	571€	870€	1025€	1395€
Short stay	From 03/04 to 04/07	We have short stays, for more informations you can visite our website ( <a href="http://www.clos-therese.com/">http://www.clos-therese.com/</a> ) or call us (+33 4 94 32 12 21)				
	From 29/08 to 30/09					

# Chalet «Les Lecques»



6

L5

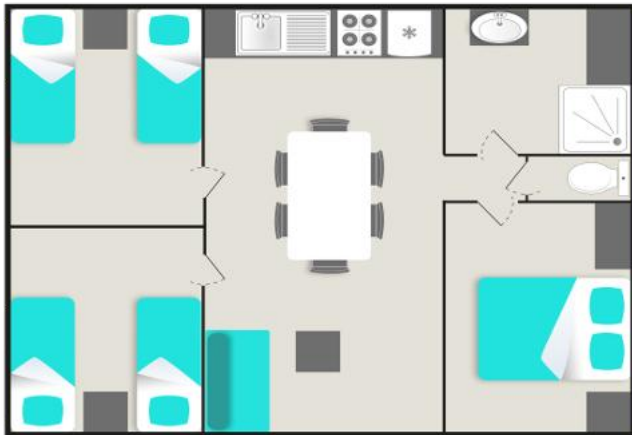
## Features:

**L5:** *Very beautiful sea view, partial shade.*

**Type:** Chalet 34m<sup>2</sup> with a covered terrace.

**Day for arrival and departure (only high season and very high season):** **Sunday.** Check-in at 4.30 pm/Check-out at 9.30 am

**Characteristics:** Three bedrooms, living room, kitchen, bathroom and separate toilet, TV, air-conditioning, electric 's grill, warm water. First circulation in 2011.



Week		Low	Middle	Season	High	Very high
		From 03/04 to 06/06	From 06/06 to 04/07	From 04/07 to 11/07 And	From 11/07 to 25/07	From 25/07 to 22/08
		643€	771€	1044€	1428€	1600€
Short stay	From 03/04 to 04/07	We have short stays, for more informations you can visite our website ( <a href="http://www.clos-therese.com/">http://www.clos-therese.com/</a> ) or call us (+33 4 94 32 12 21)				
	From 29/08 to 30/09					

# Chalet «Sanary-sur-mer»

6

**L29 Stunning sea view, great comfort, superb terrace, a true favorite**



**Features:**

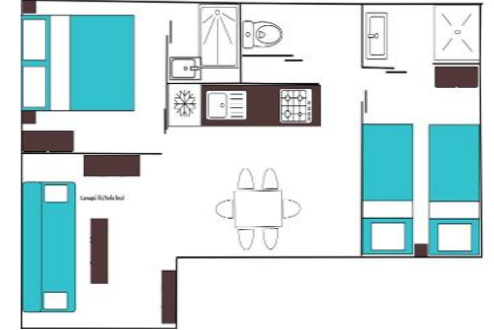
**L29: Very beautiful sea view, partial shade.**

**Type:** Chalet 35m<sup>2</sup> and superb Terrace with the garden living room terrace .

**Day for arrival and departure (only high season and very high season):**

**Sunday.** Check-in at 4.30 pm/Check-out at 9.30 am

**Characteristics:** A bedroom, living room, kitchen, 2 bathroom, toilet separated, TV, barbecue or plancha, dishwasher, warm water. First circulation in 2023.



Week		Low	Middle	Season	High	Very high
		From 03/04 to 06/06 And from 12/09 to 30/09	From 06/06 to 04/07 And from 29/08 to 12/09	From 04/07 to 11/07 And from 22/08 to 29/08	From 11/07 to 25/07	From 25/07 to 22/08
		735€	878€	1147€	1507€	1702€
Short stay	From 03/04 to 04/07	We have short stays, for more informations you can visite our website ( <a href="http://www.clos-therese.com/">http://www.clos-therese.com/</a> ) or call us (+33 4 94 32 12 21)				
	From 29/08 to 30/09					

# Chalet «La Ciotat»

8

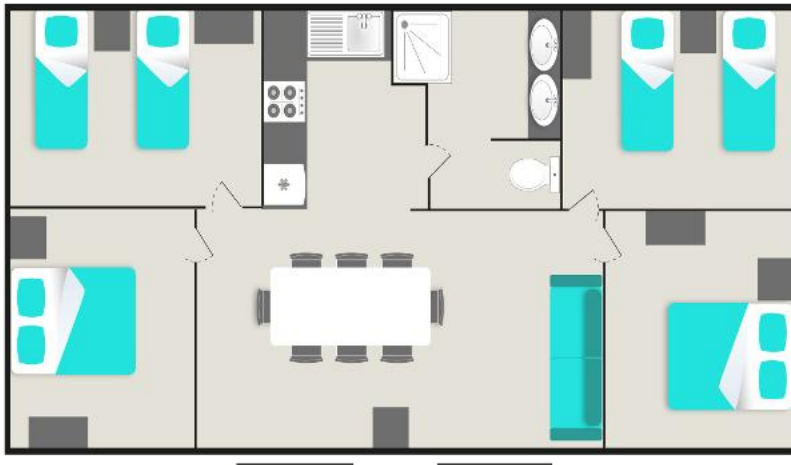
L1

**Features:**  
L1: Partial shade

**Type:** Chalet 60m<sup>2</sup> with a covered terrace

**Day for arrival and departure (only high season and very high season): Saturday.** Check-in at 4.30 pm/Check-out at 9.30 am

**Characteristics:** Four bedrooms, living room, kitchen, bathroom and separate toilet, TV, air-conditioning, electric 's grill. Renovation 2024.



Week		<b>Low</b> From 03/04 to 06/06 And from 12/09 to 30/09	<b>Middle</b> From 06/06 to 04/07 And from 29/08 to 12/09	<b>Season</b> From 04/07 to 11/07 And from 22/08 to 29/08	<b>High</b> From 11/07 to 25/07	<b>Very high</b> From 25/07 to 22/08
		756€	907€	1176€	1536€	1788€
Short stay	From 03/04 to 04/07 From 29/08 to 30/09	We have short stays, for more informations you can visite our website ( <a href="http://www.clos-therese.com/">http://www.clos-therese.com/</a> ) or call us (+33 4 94 32 12 21)				

# Camping Clos Ste Thérèse

## Informations:

### Nearby :

Bus-station in front of the campsite, Bandol's Railway at 4km,  
Supermarket à 1,6km, Bandol and St Cyr-sur-mer at 3km.

### Informations on the price:

- Choice pitch: 19€
- Fridge rental : 11€/night and 60€/week (minimum 3 nights).

**"SUPER FLEXI" HOLIDAYS:** Change of program ? Possibility to modify your stay up to 7 days before your scheduled arrival date and reschedule or modify your holiday within 2 years ! A credit voucher (for the total amount of your deposit (deducted from the booking fee and the HOLIDAYS Super Flexi option) will be given to you, no justification will be required. See the conditions of this option in our conditions of sale. 3.8% of the total amount of your stay (with a minimum of 13,50€).

### Payment :

Credit card or cash.

Tourist tax 2025: 0.86€/night by adult.

Eco-tax: 0.65€/nuît

### Equipments on the campsite:

- Washing-machine
- Ironing room
- Wi-Fi all the campsite.
- Snack-bar
- Library
- Touristic's informations
- Animation (12/07 to 24/08)
- Boules courts
- Childrens playground
- Tennis tables
- Aquatic area of 237m2 (with paddling pool and spa).
- Bread sales
- Area for Motor Home
- Sports field
- Area for young children
- Animation room
- Hairdresser

**- 10%  
to  
- 15%**

**From 03/04 to 18/07**

**And**

**23/08 to 30/09**

**Get 15% off**

**From the**

**5th night**

**(for a minimum stay of 7 nights)**

**And**

**From 18/07 to 23/08**

**Get 10% off**

**From the**

**10th night**

# Rates 2026 Camping

### BASIC PITCH FOR TENT

**Features:** Some of them have a very beautiful sea view\*

**Type:** A pitch for a tent, two persons, 10 amp and a car.

**Characteristics :** Between 80m<sup>2</sup> and 100m<sup>2</sup>.

*\* Price supplement for pitches with nice sea view and very beautiful sea view*

### CLASSIC PITCH: TENT, CARAVAN OR MOTORHOME

**Features:** Some of them have a very beautiful sea view \*

**Type:** Pitch for a tent, caravan or a motor home, two persons, 10 amp and a car.

**Characteristics :** Between 80m<sup>2</sup> and 100m<sup>2</sup>.

*\* Price supplement for pitches with nice sea view and very beautiful sea view*

### PREMIUM PITCH: TENT, CARAVAN OR MOTORHOME

**Features:** Some of them have a very beautiful sea view \*

**Type:** A pitch for a tent, a caravan or a motor home , two persons, 10 amp and a car.

**Caractéristiques:** More than 100m<sup>2</sup>.

*\* Price supplement for pitches with nice sea view and very beautiful sea view*





Price/night		Low 03/04 to 13/06 13/09 to 30/09 Rates for a stay (Minimum 7 nights)	Middle 13/06 to 04/07 29/08 to 13/09 Rates for a stay (Minimum 7 nights)	Season 04/07 to 18/07 23/08 to 29/08 Rates for a stay (Minimum 7 nights)	High 18/07 to 25/07 Rates for a stay (Minimum 7 nights)	Very high 25/07 to 23/08 Rates for a stay (Minimum 7 nights)
<b>Pitch for Tent / Caravan / Motorhome</b> 2 persons + 1 car + 10 amp (2200 watts)	<b>Premium</b> + 100m <sup>2</sup>	29,00€	38,00€	44,00€	54,00€	61,00€
	<b>Classic</b> Between 80m <sup>2</sup> and 100m <sup>2</sup>	26,00€	35,00€	39,00€	45,00€	53,00€
<b>2 Basic Pitch for Tent</b> 2 persons + 1 car + 10 amp (2200 watts)		25,00€	33,00€	37,00€	43,00€	48,00€
Extra sea view		3,00€	3,00€	3,50€	4,00€	5,00€
Adult/Child 10 to 18 years		5,00€	7,00€	8,00€	9,50€	10,30€
Child 4 to 10 years		3,50€	4,40€	5,00€	5,50€	6,20€
Children - 4 years		2,50€	2,60€	2,80€	3,20€	3,60€
Extra car		3,20€	4,50€	5,00€	5,50€	6,20€
Visitor		5,50€	5,50€	5,50€	5,50€	5,70€
Dog (Dogs classified dangerous are not accepted)		3,90€	4,00€	4,10€	4,20€	4,40€

We offer short stays ranging from one to six nights. For more information about our rates, please visit our website at <http://www.clos-therese.com>

or call us at +33 4 94 32 12 21.

**GPS:** S: 43,15938 E: 5,73023

**If you come from Marseille:** Go along the highway A50 and take the exit n°10 "St Cyr-sur-mer", take the direction Bandol D559, the campsite is located in 5,5km of the highway exit.

**If you come from Toulon:** Take the exit n°12 "Bandol" and go along the direction St Cyr-sur-mer D559, the campsite is located in 4,2km of the highway exit.

*Follow road signs: campsite Clos Ste Therese or Golf Doce Fregate (just in front)*

# Map and acces





# BOOKING TERMS AND

★★★★★  
Camping Clos Ste Therese

## GENERAL INFORMATIONS:

Name and Surname \_\_\_\_\_ Address \_\_\_\_\_

Post Code \_\_\_\_\_ City \_\_\_\_\_ Country \_\_\_\_\_

E-mail \_\_\_\_\_ Phone number \_\_\_\_\_

Dates of arrival and departure : From \_\_\_\_\_ to \_\_\_\_\_

### Information

Number of adults \_\_\_\_\_ Number children 10 to 18 years: \_\_\_\_\_ Number children 4 to 10 years: \_\_\_\_\_ Number of car : \_\_\_\_\_ Number of dog : \* Dogs classified dangerous are not accepted

### Accompanying persons

Name, Surname	Address	Date of birth	Card number	Issued date

### CAMPING: (at least 7 nights in high and very high season and at least 2 nights in low, middle and season)

Equipment	Dimensions	Choose of pitch categorie
<input type="checkbox"/> Caravan (without wigh)	x _____ cm	<input type="checkbox"/> Classic for Tent, caravan or motor-home
<input type="checkbox"/> Awing	x _____ cm	<input type="checkbox"/> Basic
<input type="checkbox"/> Motorhome	x _____ cm	<input type="checkbox"/> Premium for Tent, caravan or motor-home
<input type="checkbox"/> Tent	x _____ cm	

### Extra (camping)

- Choice of pitches  Extra tent (write the number)
- Refrigerator (minimum 3 nights )  A sea view or beautiful sea view :
- Flex Holidays

### RENTAL : Careful to the days of check-in and check-out in High and very High season : Saturday and Sunday

- Bungalow «St Cyr-sur-mer»  Chalet «Le Brus»  Chalet «Bando!»  Chalet «Sanary-sur-mer»
- Bungalow «La Madrague»  Chalet «Le Castellet»  Chalet «Cassis»  Chalet «La Ciotat»
- Mobile Home «Port d'Alon»  Lodge « Les Embiez»  Chalet «La Cadière d'Azur»
- Mobile Home «Six Fours les plages»  Lodge «Porquerolles»  Chalet «Les Lecques»

### Extra (rentals)

- Choice of rentals  Baby kit (Baby's bed and baby's chair, baby bathtub )
- cleaning service (at the end of the stzy)  Flex Holidays

## Observation :

### TERMS AND CONDITIONS:

- Only this booking form are valid for making reservations with us, as it contains all the necessary information to complete a booking.
- The final decision to confirm booking lies with the campsite who reserve the right not to disclose the reason behind a decision.
- Confirmation is subject to the acceptance of the following conditions:
  - The total amount to be paid for the booked period is as set by the campsite. To guarantee your booking a quarter of this amount+ a booking fee for a booking : 1.5% by reservation (for location, with a minimum 12€) and 2% ( for pitch, with a minimum 10€) by reservation. As soon as we receive payment, we will confirm receipt of this sum and send you your accommodation details.
  - The balance of the stay must be paid in full one month before your arrival. In the absence of full payment 30 days before your arrival, the stay will be cancelled by the campsite and the deposit paid will be lost.
  - Any changes made on arrival or during the stay to the agreed number of people, cars, additional services or other shall immediately be accounted for and the appropriate charge made.
  - If, for whatever reason, the length of your stay is cut short, there will be no refund and the total cost of your stay will remain with campsite.
  - Any campers arriving before the agreed date or time may find that their booked pitch is unavailable to them.
- Any booking for more than 2 accommodation units by the same natural person or by different natural persons who know each other and are travelling together for the same reasons and on the same holiday dates shall be considered as a group. You must contact Le Camping Clos Ste Therese by telephone or e-mail. The campsite reserves the right to study the booking request before accepting or refusing this.
- In the event of cancellation more than 30 days before the scheduled arrival date, the deposit will be refunded, minus the booking fees and the cost of the "Super Flexi" Holiday option, if this option has been subscribed to.**
- If you cancel your holiday within 30 days of the agreed arrival date, the amount paid already shall not be refunded and the balance of the stay be paid at the campsite.**
- In the event of a change to your stay less than 30 days to 7 days before the scheduled date of arrival (change of date, modification of the stay) you will be asked to pay a change of stay 5% of the total amount of your stay (minimum 15€)**

#### Flex Holidays :

**This option is only available during your reservation.**

**In case of an unforeseen event, postpone or modify your vacation within the next 2 years of the date d'arrival to your initial stay.**

**You can modify your stay up to 7 days before your arrival date.**

**No justification will be required.**

**A voucher will be issued to you for the total amount of your deposit (deducted from the "Super Flexi" option service).**

**If the price of the new stay is cheaper, you will receive a new voucher for the difference.**

**If the price of the new stay is more expensive, the price difference must be paid.**

**This voucher is nominative**

- Reservations are held for up to 24 hours following the agreed date and time of arrival. After this time, the reservation no longer stands and the amount paid shall not be refunded, but will remain with the campsite.

- All contracts are entered into with the named person on the booking form and pitches or location can, under no circumstances, be sub-let.

- In the event of litigation, only the Var Courts are competent

#### Only for locations:

- All our accommodation is non-smoking

- Rental prices are based on 2, 4, 5, 6 or 8 people plus 1 or 2 car. There is also a fee for each additional car.

- A security deposit of 350€, to cover any damages to the accommodation, plus a security deposit of 40€ à 80€ to cover any cleaning costs. A minimum amount of cleaning must be carried out by you (this is specified in your location). The accommodation must be left clean and tidy. Cleaning is the tenant's responsibility.

- The keys must be returned to 9:30 pm or 10pm (this is specified on the booking confirmation letter, the inventories of rental and also rentals) If the keys are not returned at the specified time will be charged 10€ per hour late.

Only for pitches

- The rented pitches are available on the agreed day from 2pm. They must be vacated on the agreed departure day by 12 noon.

- Has the definitive acceptance, you will receive a notifying confirmation your N° from rental or pitch retained with dates and the precise hours of arrival and departure, the deposit paid.

#### Image

You authorise Camping Clos Ste Thérèse, as well as any person appointed by Camping Clos Ste Thérèse, to photograph, record or film you during your stay and to use the said images, sounds, videos and recordings on all media (in particular on websites or pages - including Facebook and Instagram - on presentation and promotional media and in travel or tourist guides). This authorisation applies both to you and to the persons staying with you. Its sole purpose is to ensure the promotion and animation of the establishment and may not in any way damage your reputation. This authorisation is granted free of charge, for all countries and for a period of 10 years.

#### Swimming area

Only bathing suits are admitted at the swimming-pool (speedos or boxer shorts for men, one or two piece swimsuit for ladies). Every other outfit will be refused (topless, thongs, bermuda shorts, burkini, wet suits...) unless medical issues with certificate.

- Electric Car: It is strictly forbidden to charge your car using the power outlets of rental properties or designated spaces. Non-compliance may result in an additional fee being charged.